



Settings of Service for Early Childhood

DECISION TREE FOR CODING EDUCATIONAL ENVIRONMENTS

A Regular Early Childhood Program is a program that includes a majority (at least 50 percent) of nondisabled children (i.e., children not on IEPs). This category may include, but is not limited to:

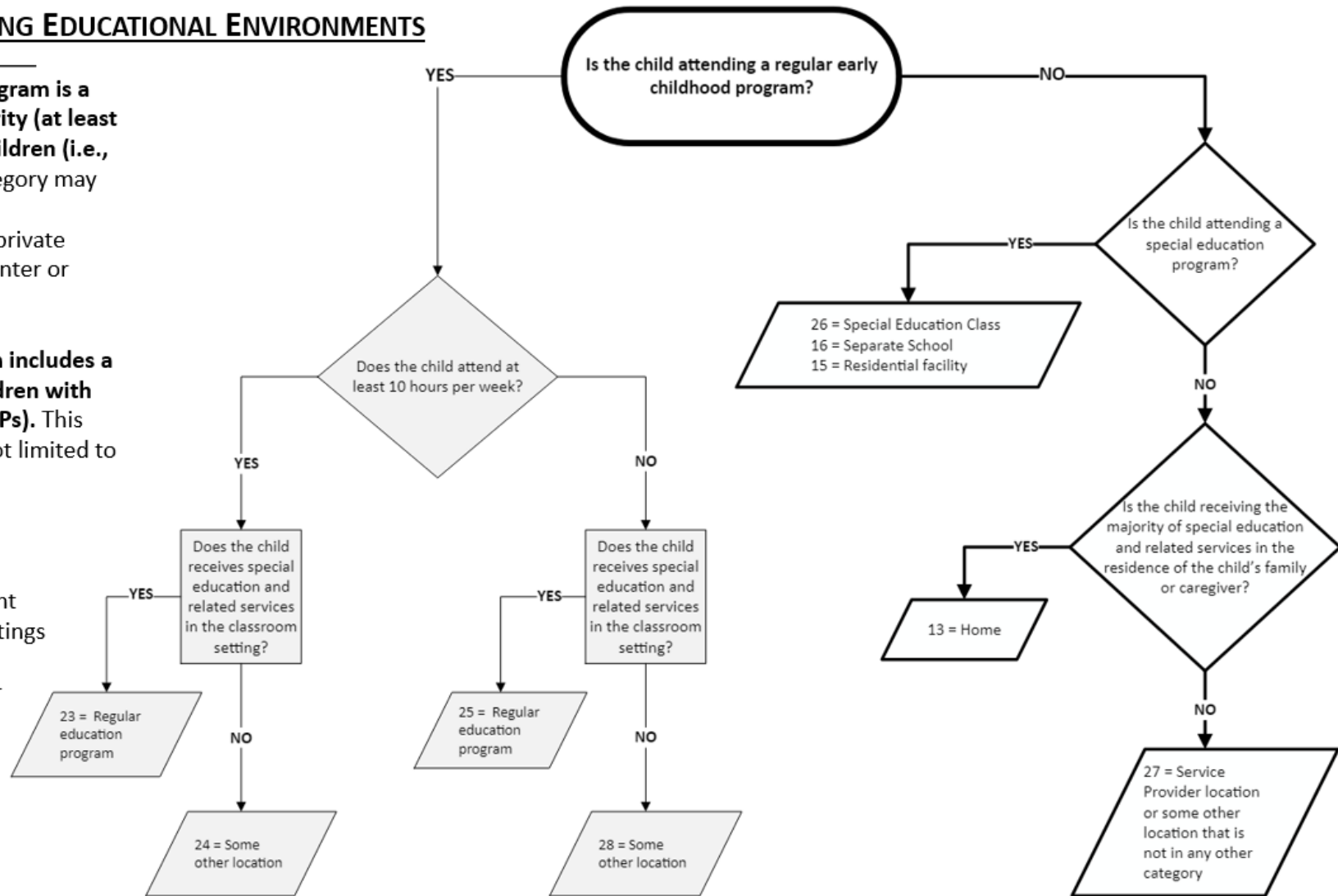
- Preschool classes, public or private
- Group child development center or childcare

A Special Education Classroom includes a majority (at least 50%) of children with disabilities (i.e., children on IEPs). This category may include, but is not limited to programs in:

- Regular school buildings
- Trailers, Portables
- Childcare facilities
- Hospital facilities – outpatient
- Other community-based settings

A separate school designed for children with disabilities.

Residential school or medical facility, inpatient





Settings of Service for Early Childhood

Code	Name	Short Description	Full Description
13	Home	Home	Are not in regular early childhood programs.
15	Residential Facility (Special Education Program)	Residential Facility	<p>These are children who received education programs and lived in public or private residential facilities during the school week. This includes children with disabilities receiving special education and related services, at public expense, for greater than 50% of the school day in public or private residential facilities. This may include children placed in:</p> <ul style="list-style-type: none"> public and private residential schools for students with disabilities public and private residential schools for students with disabilities for a portion of the school day (greater than 50%) and in separate day schools or regular school buildings for the remainder of the school day <p>Do not include students who received education programs at the facility, but do not live there.</p>
16	Separate Day School (Special Education Program)	Separate School	<p>These are children who received education programs in public or private separate day school facilities. This includes children with disabilities receiving special education and related services, at public expense, for greater than 50% of the school day in public or private separate schools. This may include children placed in:</p> <ul style="list-style-type: none"> public and private day schools for students with disabilities public and private day schools for students with disabilities for a portion of the school day (greater than 50%) and in regular school buildings for the remainder of the school day public and private residential facilities if the student does not live at the facility
23	RegECprog>or=10hrs/wk rcving svsc in ECSETTING	Services in Regular Early Childhood Program (at least 10 hours)	Attended a regular early childhood (EC) program at least 10 hours per week and received the majority of hours of special education and related services in the regular EC program.
24	RegECprog>or=10hrs/wk rcving svcs ATOTHER LOC	Other Location Regular Early Childhood Program (at least 10 hours)	Attended a regular early childhood program at least 10 hours per week and received the majority of hours of special education and related services in some other location.
25	RegECprog<10 hrs/wk rcving svcs IN ECSETTING	Services in Regular Early Childhood Program (less than 10 hours)	Attended a regular early childhood (EC) program less than 10 hours per week and received the majority of hours of special education and related services in the regular EC program.
27	Service Provider Location	Service Provider Location	Are not in regular early childhood programs
28	RegECprog<10 hrs/wk rcving svcs AT OTHER LOC	Other Location Regular Early Childhood Program (less than 10 hours)	In a regular early childhood program less than 10 hours per week receiving the majority of their services in some other location